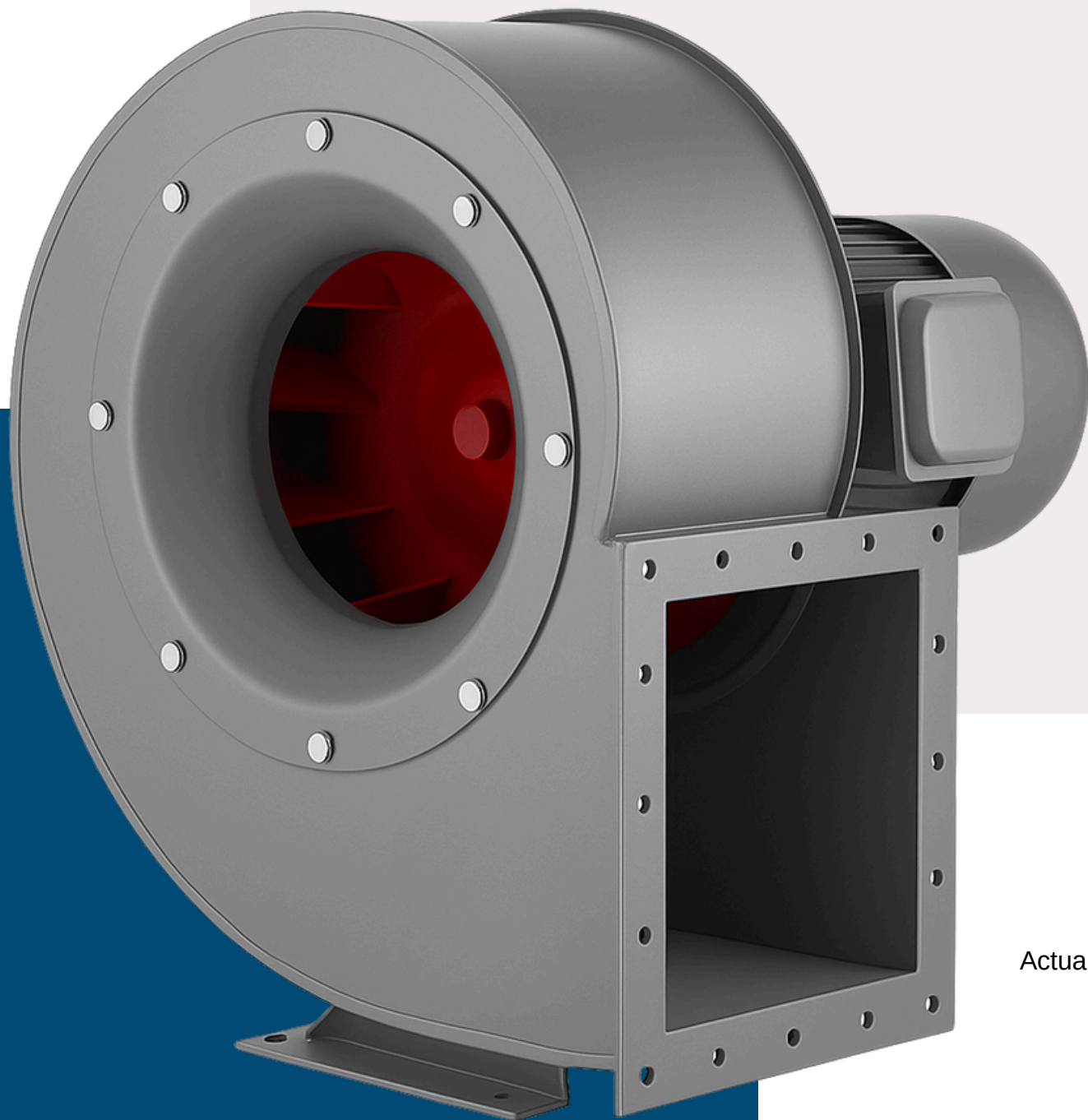


ASTBERG SIROCCO

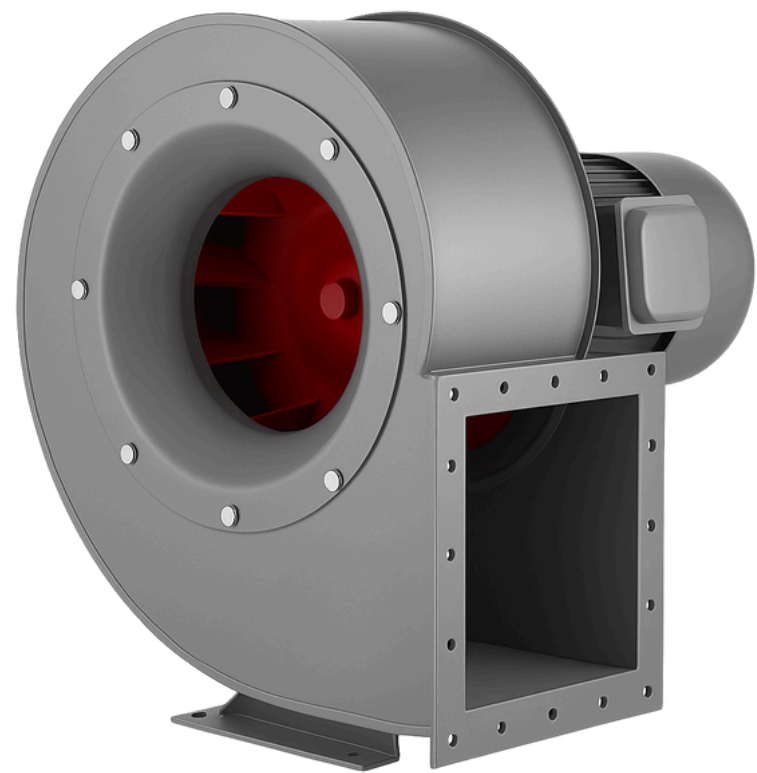
TYPE MULTIPLE APPLICATION FAN



Actual product may differ *

KEY FEATURES

- Impeller/Blades: These rotate and impart energy to the air.
- Housing: Usually spiral-shaped (volute) to help direct the air efficiently.
- Inlet and Outlet: Air enters axially (from the center) and exits radially (perpendicular to the shaft).



APPLICATIONS:

- Heating, Ventilation, and Air Conditioning (HVAC)
- Dust collection systems
- Combustion air supply
- Industrial cooling and drying
- Clean rooms and fume hoods

PERFORMANCE PARAMETERS

Motor HP (F Class/IE2-Havells/CG)	RPM/Pole	Model / Inlet Dia	CAPACITY		
			CMH	CFM	STATIC(MMWG)
1.5 HP	2850/2P	ACBL 250	2800	1647	40
3 HP 1	2850/2P	ACBL 300	5000	2941	100
HP 1.5	1450/4P	ACBL 350	4000	2353	40
HP 2	1450/4P	ACBL 400	5000	2941	50
HP 3	1450/4P	ACBL 400	6000	3529	45
HP 5	1450/4P	ACBL 450	8000	4706	60
HP 7.5	1450/4P	ACBL 500	14000	8235	60
HP 7.5	1450/4P	ACBL 550	17000	10000	70